

The Mighty Waikato

Where magic runs deep



PRE & POST SELF-DRIVE 'MIX & MATCH' FAMIL

Any time between 1-7 May and 12-19 May

Situated in the heart of the North Island the diverse Waikato region encompasses New Zealand's fourth-largest city, the country's longest river, and the world-famous glowworm caves in Waitomo. Well-known for its nature-based tourism, underground adventures and Middle-earth movie magic the Waikato region offers something for every traveler.

Self-Drive Mix & Match Itinerary notes:

To make it easier for our friends in the travel trade to experience the best of what we have to offer we've created this flexible pre and post famil option, allowing you to choose your own activities and combine your Waikato experience with other regional famil as required.

Once you have selected the activities and accommodation you'd like to famil while in our region, please get in touch and we can tailor-make your itinerary to suit your travel plans.



Rebecca Evans
Hamilton & Waikato Tourism

rebecca@waikatonz.com
DDI: +64 7 843 1852
Mobile: +64 27 284 2252

WAIKATO EXPERIENCE OPTIONS

Hobbiton Movie Set, Matamata

2 hour tour

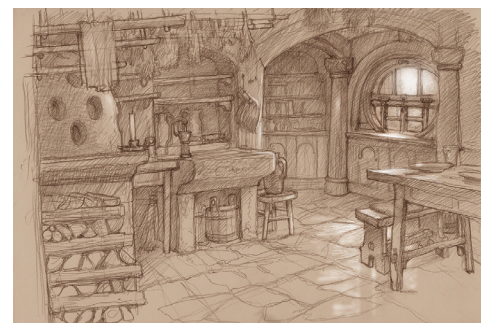
Guided tours of the set take visitors through the 12-acre 'Shire' which is the picturesque home of hobbits in both The Lord of the Rings and The Hobbit Trilogies. The two-hour tour finishes with refreshments at The Green Dragon pub in its tranquil setting beside the lake and Millhouse.

Hobbiton offers a range of other experiences including daytime dining options, private tours and The Evening Banquet Tour experience – a day tour followed by a dinner feast fit for a hobbit at The Green Dragon and concluding with a special tour back through the set lit up and under the night sky.

Venture Beyond the Door – from 1 Dec 2023

Venture beyond the door and into an authentic hobbit hole interior. Each interior will feature an entry hall, two bedrooms, a bathroom, a kitchen and dining area, an equipped pantry and a parlour, complete with a crackling fireplace to provide guests with a fully immersive experience.

www.hobbitontours.com



Hamilton Gardens, Hamilton

1h 15min tour

The award-winning Hamilton Gardens is undoubtedly one of the region's most popular destinations with an estimated 1 million visitors per year.

This visually stunning 54-hectare 'living museum' is webbed by paths that journey through a gallery of gardens including grand Italy, modern America, tranquil China, contemplative Japan, New Zealand's only traditional Māori garden, Te Parapara, and the Fantasy Gardens collection including the Surrealist Garden, where everything is five times the normal size. The recently opened Egyptian Garden is also a must-see and is believed to be the first recreation of this sacred garden type.

Guided tours of Hamilton Gardens are available and can include dining options in and around the various gardens. The purpose-built Summer House offers private dining and event space for groups overlooking the Mansfield Garden along and gourmet picnic are available for groups and FITs.

www.hamiltongardens.co.nz



Sanctuary Mountain Maungatautari, Te Awamutu

50 minutes or 1h 30min guided tour

A totally unique experience, just southeast of Hamilton, Sanctuary Mountain is an internationally significant conservation project encompassing 3,400 hectares of native forest all surrounded by a state of the art predator-proof fence.

Guided tours (day-time and night-time) are available, where visitors can discover New Zealand's native bush and bird life as it was hundreds of years ago. Spot Tuatara and Takahe in the Tautari Wetland walk and check out the views from the canopy tower in the Southern Enclosure. After dark, spot native Weta and glowworms and listen for the call of the Kiwi, all within this wildlife haven.

Note: This product is easily accessible being located on the main road driven between Waitomo Caves and Hobbiton Movie Set/Rotorua.

www.sanctuarymountain.co.nz



WAIKATO EXPERIENCE OPTIONS

The Red Barn – Dining and Farm Experiences

Dining experience 1 hr, Farm and Dining experience 2 hours

The Red Barn is a historic venue on a 500-acre dairy farm with spectacular views of stunning rural pastures and mountain ranges. The Red Barn offers groups and premium FITs pasture-to-plate style dining inside the barn venue or in their well-appointed courtyard.

Red Barn's Taste Waikato degustation showcases the best of Waikato's artisanal food presented over five courses by their executive chef, leaving guests with an unforgettable experience and a real taste for the flavour of Waikato.

Their Farm Tours offer traditional hospitality at its best. Guests can enjoy a guided tour of the working dairy farm to learn about the history behind the dairy industry and get a real understanding of pasture-to-plate dining.

www.redbarn.co.nz



Riverside Adventures – Kayak & Cycle experiences

2 hour guided experience

Riverside Adventures operates across the Waikato region offering half-day, one-day or multi-day cycling and kayaking experiences centered around the Hauraki Rail Trail and Te Awa River Ride cycleway and Lake Karapiro.

Offering both full and partial services including bike hire, kayak hire, guides, shuttles, F&B and accommodation, the experiences cater to all ages and fitness levels and can be as gentle or active as you choose.

www.riversideadventures.co.nz



Roselands – Dining – New Zealand style BBQ experience

1 hour

Roselands sits on an 18acre site that features a large restaurant catering up to 300 people, a large conference room, a relaxing lounge area, and an indoor-outdoor area and walking trails around the extensive grounds.

Roselands offers a variety of delicious lunches and dinner experiences, including the renowned New Zealand styled BBQ experience.

www.roselandsresortwaitomo.com



Cornerstone Alpacas – Classic Alpaca Tour

1 hour

During the classic tour, you'll be treated to a fun and informative alpaca farm visit. Take the opportunity to feed the alpacas and learn more about them, their history and their beautiful coats! Cornerstone caters to groups and FITs alike with onsite dining and retail offerings.

www.cornerstonestud.co.nz



WAIKATO EXPERIENCE OPTIONS

WAITOMO

Waitomo Glowworm Caves tour

45min

Experience the world-famous Waitomo Glowworm Caves, formed over 30 million years ago with their majestic and ornate cave decorations, the deep limestone shaft known as the Tomo and the equally magnificent Cathedral cavern known for its world-renowned acoustics, the home of where New Zealand's own opera diva Kiri Te Kanawa once performed.

A local tour guide will provide an informative and entertaining commentary, sharing stories and cultural legends as you journey through the cave. Enjoy the awe-inspiring boat ride under thousands of magical glowworms unique to New Zealand.

www.waitomo.com/waitomo-glowworm-caves



Ruakuri Cave tour

1h 30 min

Ruakuri Cave is an experience that must be seen to be believed. Offering a captivating blend of the most compelling subterranean experiences, visitors begin the tour by journeying down through the spectacular, man-made spiral entrance, marvel at the softly folding shawl-like limestone formations and crystal tapestries while listening to the distant thunder of subterranean waterfalls. See glowworms up close and learn about their fascinating life.

Major features of the Ruakuri Cave tour include Holdens Cavern, named after James Holden who first opened the cave to the public, The Drum Passage, The Pretties, and The Ghost Passage.

With clever and innovative design, Ruakuri Cave has full wheelchair and pushchair access and both the cave and its visitor centre are proudly powered by 100% renewable energy.

www.waitomo.com/ruakuri-cave



Spellbound – Explorer Tour

2h 30 min

Visit two unique caves on this tour. Firstly, enjoy the Spellbound Glowworm Cave for a spectacular boat ride underneath twinkling glowworms. Then experience the mystery of The Cave of the Spirit. This is a small group experience with no more than 12 people.

Photography is allowed and hot drinks are served. Easy walks between caves through beautiful limestone scenery top off a really memorable tour.

www.glowworm.co.nz

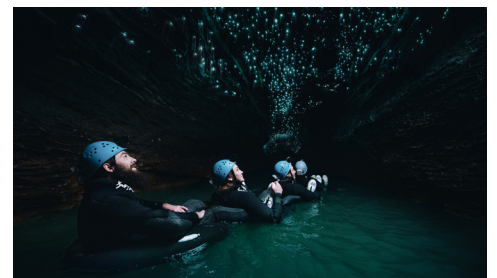


Legendary Black Water Rafting Company - Black Labyrinth

3 hours

What began as a special treat for a brave few has developed into a spectacular tourism attraction that gives visitors of all ages the chance to jump, weave, and float down subterranean streams in a glowworm-studded wonderland.

www.waitomo.com/black-water-rafting



WAIKATO EXPERIENCE OPTIONS

WAITOMO

Legendary Black Water Rafting Company - Black Odyssey **5 hours**

Challenge yourself on this extreme dry-caving adventure. Test yourself with extreme traversing and mind-blowing heights. Edge over crossings high above roaring stream ways. You'll also spider-walk through ancient rift passages and experience the challenges of technical high rope work and flying foxes.

www.waitomo.com/Black-Water-Rafting/Pages/black-odyssey-tour

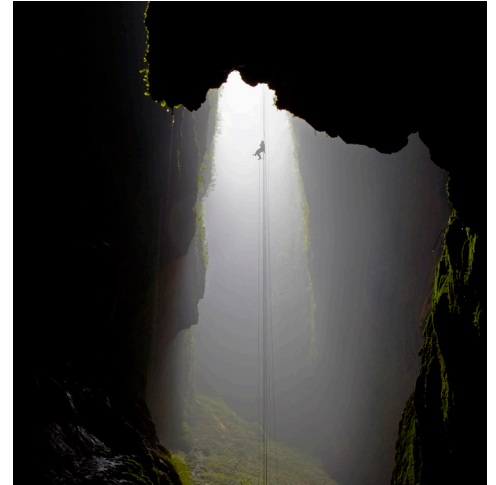


Waitomo Adventures - Lost World **4 hours**

Abseil 100m into the surreal Lost World. Descend slowly, suspended in the massive void. Look around into upper levels of the cave and see weird plants clinging to the sheer walls and all the while the roar of the Mangapu river echoes up from caverns far below.

Once down in the cave, catch your breath, because this is actually just the beginning - there's a lot more to do and see as you explore the massive vaults - See excellent glowworms and gigantic flowstone formations. Gradually climb back to the surface through massive craggy caverns ledges and ladders including the legendary 30m "stairway to heaven".

www.waitomo.co.nz/adventure/lost-world-half-day-adventure



WAIKATO ACCOMMODATION OPTIONS

The following properties are available for site visits and overnight stays

HAMILTON

Novotel Tainui Hamilton

Novotel Tainui Hamilton is Hamilton's only 4.5 star hotel conveniently located in the CBD, on the banks of the Waikato River. This contemporary hotel boasts 177 well-appointed rooms and is complete with restaurant, bar and conference facilities.

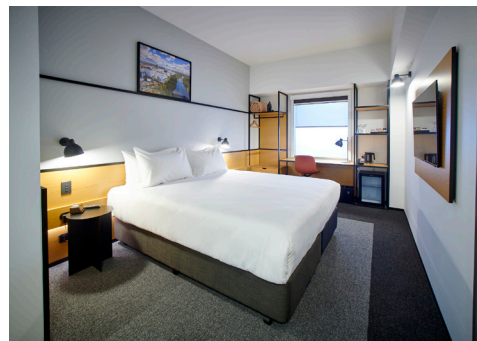
www.novotel.com/hamilton



Ibis Tainui Hamilton

Situated on the banks of the Waikato River, Ibis Tainui Hamilton is your gateway to the Waikato region. Positioned in the heart of Hamilton City, just 20 minutes from Hamilton International Airport, offers easy access to relaxing river walkways, cafes, restaurants, SkyCity, shopping and entertainment options. Ibis Tainui Hamilton underwent an extensive renovation in December 2022 and the concept is the first of its kind for Accor in the Southern Hemisphere.

www.accorhotels.com/gb/hotel-6690-ibis-hamilton-tainui



Jet Park Hamilton Airport

Just a 5-minute walk from Hamilton airport, Jet Park is the perfect space to recuperate after a long journey or a great place to start before it begins. After completing its multi-million-dollar makeover in 2022, the hotel is now equipped with 62 newly revamped rooms and updated restaurant & bar – Propeller.

www.jetparkhamilton.co.nz



Ramada Hamilton

Ramada Hamilton is situated in the vibrant centre of Hamilton's bustling CBD, Ramada Encore by Wyndham puts guests in the heart of the action. The property is a modern hotel set in a historic 19th-century building, offering 69 guest rooms and suites for every kind of traveller.

www.ramadahamilton.co.nz



Distinction Hotel, Hamilton

Situated to the north of Hamilton's CBD Distinction Hotel offers 147 rooms and suites, onsite dining and fitness facilities. The property is perfect for families and groups due to its large footprint and expansive green outdoor spaces.

www.distinctionhotels.co.nz/hotels-hamilton



WAIKATO ACCOMMODATION OPTIONS

WIDER WAIKATO

Hidden Lake Hotel, Cambridge

Located in the boutique town of Cambridge, the contemporary property includes a gourmet restaurant and bar and 33 superiorly appointed rooms and apartments. This environmentally conscious hotel prides itself on locally made, organic products and blends modernity with heritage architecture to reveal a new style of Waikato accommodation.

www.hiddenlakehotel.co.nz



Castaways Resort, North Waikato

With 15 well-appointed spacious two-bedroom Chalets and 10 stylish Studio units, Castaways Resort offers accommodation options to suit every guest. The Castaways restaurant and bar offers panoramic views over Karitahi beach and the Tasman sea reflecting the rugged beauty of its west coast location. Castaways are continuing their resort extension programme adding a number of two-bedroom villas to their studio and chalet offerings.

www.castaways.co.nz



Te Tiro, Waitomo

Situated halfway between Waitomo Village and Marakopa Falls, Te Tiro offers two self-contained pioneer-style cottages and a lotus belle glamping tent. Enjoy panoramic views of the central north island and mountain during the day and discover glowworms at night nestled in the native New Zealand bush only metres from the accommodation.

www.waitomocavesnz.com



Podium Lodge, Cambridge

An 'Olympic Village' inspired design, Podium Lodge offers a one-of-a-kind Cambridge accommodation experience. Located on the outskirts of picturesque Cambridge the property is perfect for groups, families and independent travelers.

www.podiumlodge.co.nz



Te Karaka Lodge, North Waikato

Te Karaka Lodge, a 10-room luxury lodge in the north of the region, offers a hosted experience in the heart of rural north Waikato farmland. The purpose-built property offers comfort, space and contemporary style in a modern farm stay environment of a working station. With a focus on farm-to-table cuisine, and rural views, this working sheep and cattle station will offer a true insight into NZ rural living with all the trimmings of a luxury experience. The property will be represented by Capstone Hotel Management.

www.tekarakalodge.co.nz



The Clements, Cambridge

The Clements Hotel is due to open at the end of Q1 2024 following a complete renovation of the historic Masonic Hotel in the town centre of Cambridge, 20 minutes from Hamilton City and Hobbiton Movie Set. This 5star boutique hotel offering will be a welcome addition to the Waikato hospitality and accommodation portfolio. Under development are 29 rooms and The Orangery, a basement Cocktail Lounge. The property will be managed by Capstone Hotel Management.

